



DENTA  
SONIC

# DentaSonic NI-IPC Contra Angle Operation Manual



Dear dentist / Orthodontist:

Thank you for choosing our internal irrigation reduction contra angle, and hopes that you will benefit greatly from working with your new product.

Please observe the following notes to assure continued trouble-free, economical and safe product operation.

In case of any products fault, please consult local Customer Assistance.

This manual applies to 4:1 reduction contra angle, and 6:1 reduction contra angle.

### **Presentation**

1. Inner spray reduction contra angle, 1 piece
2. Cap wrench, 1 piece
3. Spray Nozzle, 1 piece
4. Operation manual, 1 sheet
5. Hole needle, 1 piece

### **Technical Data**

Gear ratio: 4:1/ 6:1

Irrigation: Inner channel

Noise:  $\leq 70$ dB

Applicable: Strip (2.35mm), CA bur (2.35mm), FC Bur (1,6mm), Hand File (Endo head)

Chuck type: reciprocating Head, push button rotating head, Endo oscillating Head

Sterilization temperature: 135°

## **Application**

Professionally used by dentists as prophy or endodontic treatment.

### Product Superiority

- The head can be simply and quickly removed from the shank and exchanged.
- There are CA bur head and hand file head for your different choice, to meet different function, all you have to do is just change another head.
- They are time-saving, durable, flexible, and economical.
- Hand file heads: there are two different movements head for individual choice: Reciprocating, 0.9mm UP & DOWN, 1.1mm UP & DOWN movement.

## **Notes & Cautions**

### **1) Notes before operation**

- The product is available for dental inner spray air/electric motor in accordance with E type connector only.

- Only to be used by a qualified dental practitioner.
- Before using, please check burs and function of the chuck at outside of oral cavity of patients, if loose, too much vibration, irregular noise and too much heating up etc, please do not carry on.
- Avoiding crash and drop.
- Forbidding disassembling or conversion.
- It shall be sterilized before handpiece is used at the first time and after treatment.
- Do not insert or remove bur while the bur is in motion.
- Please use standard bur or drill.
- Please do not exceed the max rotation speed of the bur or drill.
- Please keep the bur or drill be clean. Any other foreign particles get inside, it may cause vibration, weak chucking power or other abnormalities.

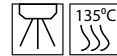
## 2) Notes in operation

- Please do not operate without bur or drill.
- Please do not push the back cap while the handpiece is in motion, that will cause the handpiece damage or the bur burst out.

## 3) Notes after operation

- Please cleaning, lubricating and autoclaving after treatment. Otherwise the blood will make the cartridge corrosion.
- The handpiece will heat up if lack lubricating.
- Please do not use the acid solution to scrub, inject or soak the handpiece.
- Please check the function before long time not use.

## Explain of the figure, symbol and abbreviation



Sterilization temperature



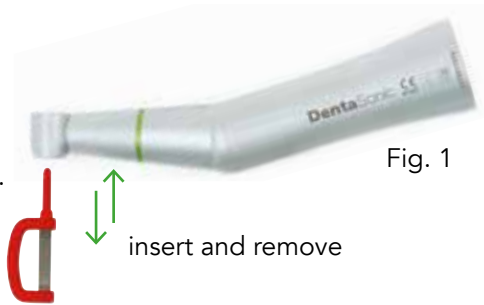
CE mark (European Community).  
Product meet the requirements of the applicable EC directive.

## Operation instruction Strips

### 1) Insert or remove strip

a) Inserting (Fig. 1, 2)

b) Hold the tip and push the blade (tip, shank) into the head until it stops or until you feel that the grip are enough.



### 2) Removal

To remove the blade (tip, shank), pull out and turn left and right the blade (tip, shank) from front end. (Fig. 5)

Fig. 5  
Hold the strip, pull out and turn left and right

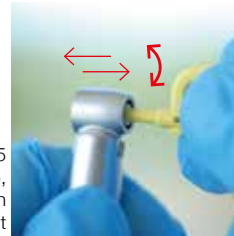


Fig. 4  
How to never hold the strip!

Fig. 3  
How hold the strip on correct way



## Operation instruction burs and polishers

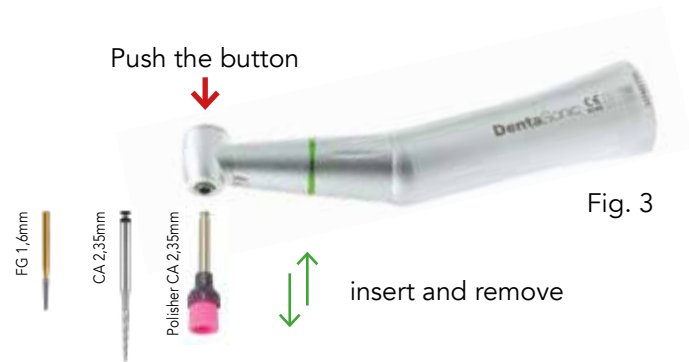
### 1) Insert or remove bur and polisher

a) Inserting (Fig.1, 2, 3)

b) Press the push button firmly, insert bur or polisher to the end.

### 2) Removal

Press the push button firmly and remove the bur or polisher. Fig.3



### 3) Contra angle handpiece head

Turn the strip Lock Ring all the way in the direction of arrow marked "open" to open the chuck, remove out the head, or "close" to close the chuck, insert the head Fig.4.

 turn left to open and remove head


 turn left to close

Fig. 4



The head could be changed, there are four kinds of head for your individual choice, CA, FG bur head (Fig.5), Hand File Endo head (Fig.6), reciprocating Strip Head (Fig.7)



FG 1,6mm CA 2,35mm

Fig 5.



Endo CA 2,35mm

Fig 6.



Reciprocating 2,35mm

Fig 7.

## How to use Hole needle

Insert the hole needle in the water hole on the HandPiece, to clean it of residues.



Hole needle

## Handpiece inserting & removal

### 1) Inserting

Insert the handpiece into the motor and turning all the way until it click to stop.

Fig.8



Fig.8



## 2) Removal

Grip both handpiece and motor respectively pulling and separating.

### Notes:

Please do not insert or remove handpiece before motor complete stop turning.  
The structure of connector conform with ISO3964 standard.

## Sterilization

Steam autoclave is recommended. Autoclave Procedure: After each treatment, sterilizing handpiece in autoclave according to the following steps:

- 1) Scrub dirt and debris from the handpiece, and wipe clean with alcoholimmersed cotton swab or cloth. Do not use a wire brush.
- 2) Lubricate with Oil-SPRAY or Lubricant oil.
- 3) Insert into an autoclave pouch. Seal the pouch.
- 4) Autoclave up to max. 135°C. EN 13060 4.6.3 recommends autoclaving for 3 minutes (minimum holding time) at 134°C, or 15 minutes (minimum holding time) at 121°C. DS recommends Class B or S sterilization.

**Note:**

- Please do not use the acid solution to scrub, inject or soak the handpiece.
- Please do not autoclave the handpiece with residual chemical substances.
- Handpiece should be packed well and place at clean and dry room without dust, sulfur and salt.
- Please do not touch the handpiece immediately after autoclaving.

**Caution:**

- In case the sterilizer chamber temperature could exceed 135°C during the dry cycle, skip the dry cycle.
- Always place the handpiece in the local temperature at the bottom of chamber could rise beyond the set value.

*For more information about sterilization, please look on our website:* [denta-sonic.com](http://denta-sonic.com)

**Lubrication**

After each treatment, sterilizing handpiece in autoclave according to the following steps:

Supply Oil-SPRAY after each use and/or before autoclaving.

- 1) Push E-type spray nozzle attachment over the SPRAY nozzle until it firmly seats.
- 2) Shake the can 3-4 times to well mix lubricant and propellant.
- 3) Insert the E-type spray nozzle in the rear of the handpiece and spray for approximately 2-3 seconds until the oil comes out of the handpiece head or nose.
- 4) Keep the Spray can upright.

E-type Spray Nozzle



PANA-SPRAY

PANA-SPRAY

### Forward/Reverse Rotation

- 1) Forward Rotation: Turn the FWD/REV change ring to "F" as shown in Fig.9
- 2) Reverse Rotation: Turn the FWD/REV change ring to "R" as shown in Fig.10
- 3) When the FWD/REV change ring is positioned in the middle of "F" and "R", the drive air is interrupted and the motor does not rotate Fig. 11
- 4) When FEW/REV change ring is positioned in F or R, the rotation speed is maximum.

Fig 9.



Fig 10.



Fig 11.





DS IPR Head and Spray Nozzle



DS IPR Head and Spray Nozzle together



PANA-SPRAY

### **Important IPR Head Lubrification Maintenance & Care**

After every day, clear with oil spray the head! This are very important, according to the following steps: Supply Oil-SPRAY after each use and/or before autoclaving.

- 1) Remove the head from the hand piece
- 2) Push the IPR spray nozzle attachment over the SPRAY nozzle until it firmly seats.
- 3) Shake the can 3-4 times to well mix lubricant and propellant.
- 4) Insert the IPR spray nozzle in the rear of the IPR Head and spray for approximately 2-3 sec. until the oil comes out of the IPR head, keep the Spray can upright.
- 5) After that, remove the spray nozzle and clean with a paper towle the head.
- 6) Autoclave the head for 12 min at 135°C.

### **Attention at our warranty terms!**

Warranty not valable if the daily lubrication are not made!

## **Maintenance & Care**

After each treatment, sterilizing handpiece in autoclave according to the following steps:

- 1) Remove the bur/strip or polisher, use brush to clean handpiece, then cleaning outside of handpiece with alcohol solution.
- 2) Lubricate handpiece.
- 3) Package into autoclaving pouch.
- 4) Autoclave the handpiece for 12 min at 135°C.

- 5) Dental handpieces cannot be soaked in a disinfectant with acidic liquid. it will seriously damage the bearings and handpiece internal components.
- 6) Do not use an ultrasonic cleaner to clean the dental handpiece.
- 7) It is not recommended to repair the dental handpiece by little experience person. For repairing, please return to the factory or send to the designated after-sales service maintenance office.

### **Storage and transportation conditions**

Temperature: -10~40°C

Humidity: 0~90% RH

Atmospheric pressure: 70-106 kPa

Moisture proof, avoiding sunshine and heat source during transport.

### **Basic Parameters MicroMotor**

Description: E-type Low-speed 1:1, internal cooling system

Air Pressure: 245~392kPa (recommend air pressure: 300KPa)

Atomized water pressure: 200 kPa

Atomized air pressure: 200 kPa

Noise: ≤80dB

### **Warranty term**

- 1) This product is warranted against manufacturing defects for one or two years from the date of effective delivery of the product. Bearing and cartridge is warranted 6 months.
- 2) The warranty is limited to the repair or replacement of parts having manufacturing defects duly evidenced by the manufacture or by the Authorized Technical Assistance Network.
- 3) This dose not include the repairing of fault due to non-observance of the use and maintenance instructions, tumbles or beats, impropriety storing, action of natural agents and technical assistance carried out by non-authorized personnel.

- 4) This warranty ceases due to the normal course of the validity term, due to alterations introduced in the product or use of improper fittings and due to technical assistance carried out by non-authorized personnel.
- 5) The repair or replacement of parts within the warranty period will not extend the original validity term of the warranty.
- 6) This warranty limited to the repair or replacement of defective parts, not including parts subject to natural wear, obeying the conditions of the foregoing items.
- 7) Charges resulting from transport of parts of the own product will be the customer's responsibility.



Twist HP 4:1



Twist Light 4:1



Twist HP 6:1



DS-One 4:1



Micro Motor



DENTA  
SONIC



DS DentaSonic SA • Via Piodella 12 • CH-6933 Muzzano • Switzerland  
Tel. +41 91 600 19 60 • [info@dentasonic.ch](mailto:info@dentasonic.ch) • [www.denta-sonic.com](http://www.denta-sonic.com)